



Heworth House, Melrosegate, York
£1,595 pcm

Stunning Fully Redecorated 2-Bedroom Bungalow for Rent in Heworth House



PRESENCE & Co.

Heworth House, originally constructed in 1865 as the Rectory, has been meticulously restored to offer six distinctive apartments, each thoughtfully designed to blend historical charm with modern conveniences.

This particular bungalow features its own private entrance, providing a sense of individuality and privacy. The open-plan kitchen and living area is equipped with contemporary fittings and integrated appliances, including a fridge/freezer, washing machine, and dishwasher, ensuring a seamless living experience. The property comprises two well-proportioned bedrooms and a modern family bathroom, catering to both comfort and functionality.

Additionally, residents benefit from one allocated off-road parking space, a valuable asset in this sought-after location. Situated on Melrosegate in York, Heworth House is conveniently located just a short drive from York City Centre, offering easy access to the city's amenities while maintaining a tranquil residential atmosphere.

The area is well-served by public transport, with York railway station approximately 2.4 kilometers away, facilitating convenient travel options.

For families, the property is in proximity to reputable educational institutions. Heworth Church of England Primary School, rated 'Good' by Ofsted, is just 200 meters away, and Archbishop Holgate's School, a Church of England Academy with an 'Outstanding' rating, is approximately 1.9 kilometers from the residence.

The meticulous restoration of Heworth House ensures that this apartment retains its historical character while providing modern comforts, making it a unique and desirable place to call home.

Deposit: £1,840.38

Holding Deposit: £368.07



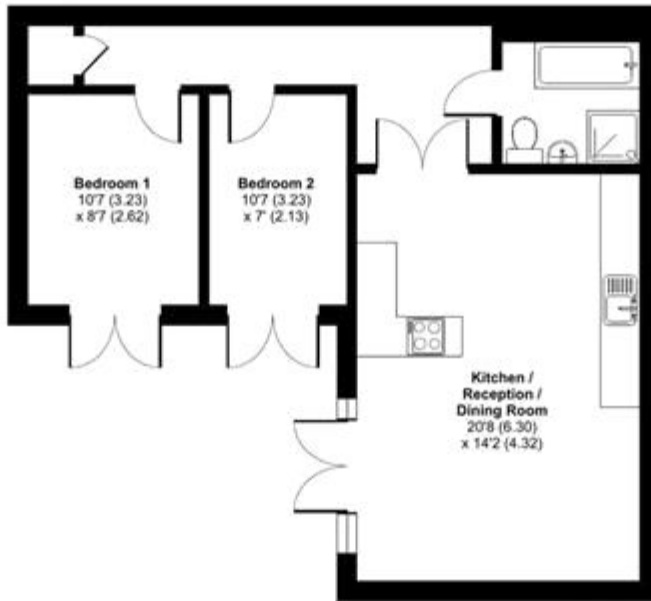
Whilst every effort is made to ensure the accuracy of these details, it should be noted that the measurements are approximate only. Floorplans are for representation purposes only and prepared according to the RICS Code of Measuring Practice by our floorplan provider. Therefore, the layout of doors, windows and rooms are approximate and should be regarded as such by any prospective tenant.



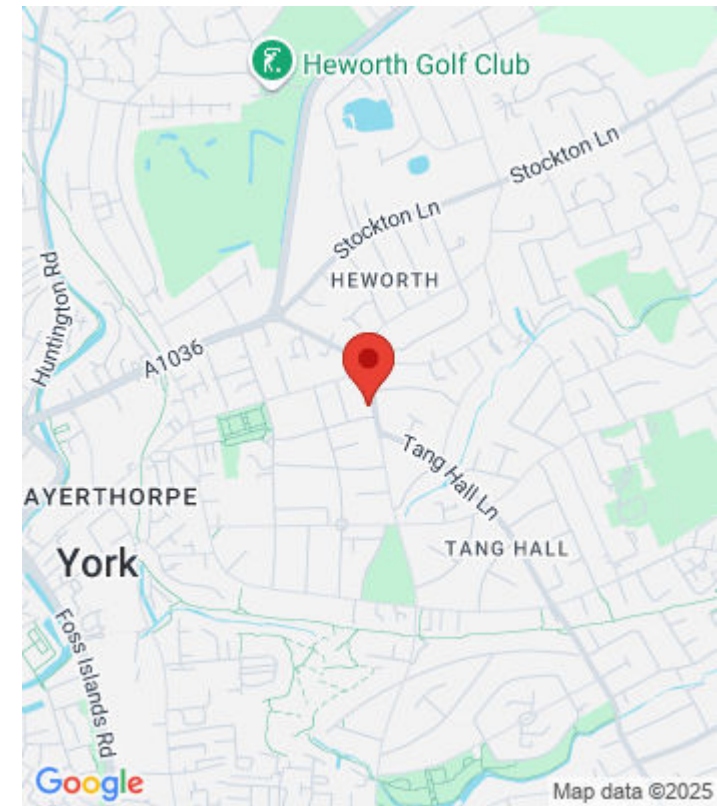
Heworth House, York, YO31

Approximate Area = 639 sq ft / 59.4 sq m

For identification only - Not to scale



GROUND FLOOR



Floor plan produced in accordance with RICS Property Measurement Standards incorporating International Property Measurement Standards (IPMS2 Residential). © n/a/ecom 2024. Produced for Presence & Co. REF: 1194695

